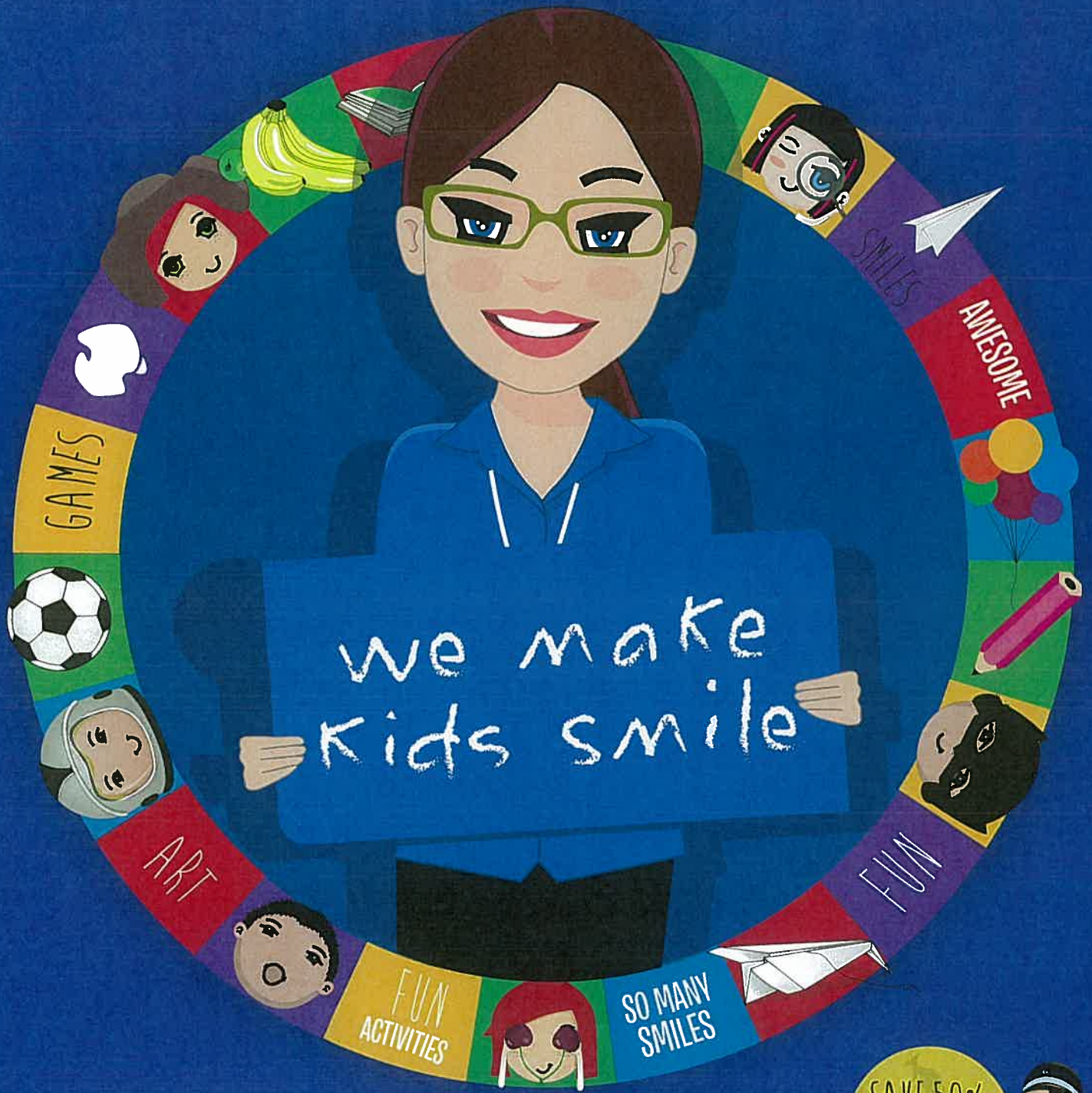


AFTER SCHOOL CARE



www.campaustralia.com.au

1300 105 343

SAVE 50%

or more with the
Child Care Benefit
and Rebate



After School Care provides a safe environment for children to explore and play



About the program

After School Care promotes a healthy and active lifestyle, encourages friendships and supports children to develop new skills – all while having fun.

Serpentine Jarrahdale Grammar School has partnered with Camp Australia, the leading provider of Before and After School Care in Australia.

This high quality program embraces the schools values and builds on your child's educational experiences and individual interests.

The program combines active games with planned and unplanned play, quiet time, homework time and a healthy snack. Every day is an adventure led by enthusiastic Camp Australia educators who are on a mission to bring smiles to kid's faces. As trained educators, we know lots of different ways to help your child get the most out of their day and feel good about themselves.

Program	Times	Full fee	Out of Pocket*
Before Care	06:30 AM - 08:30 AM	\$19.28	\$6.25 - \$9.64
After Care	03:05 PM - 06:00 PM	\$28.91	\$9.51 - \$14.46

The information outlined above covers the most common program times and fees. For a full listing of all program details and fees for the service, please visit our website. We have over 200 Holiday Clubs. Please use the Holiday Club finder on our website to find the most convenient service for you.

Next step

visit www.campastralia.com.au and enter your school name in the school finder.

Welcome

Let us help you find your school...

Enter your school name below to begin.



* Notes on Fees and out of pocket:

Almost all Australian residents are eligible for some form of government rebate.

1. The Child Care Benefit (CCB) is income tested and scaled, resulting in a reduction of between 0% and 85% of session fees.
2. The Child Care Rebate (CCR) is not income tested and is available to almost all Australian families. It provides a rebate of 50% of fees owing after the CCB has been calculated and considered.

So that the CCB and CCR can be automatically applied to your account, you will need to provide your Centrelink Customer Reference Number/s (CRN/s) during the registration process. These can be obtained from the Family Assistance Office on 13 61 50.